

MPW

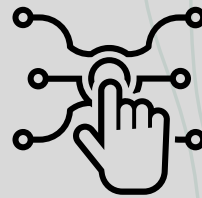
Multi Ply Wood

WOOD 4 WORLD

**12mm
Sanded,
Calibrated and
Film Faced
Plywood**



DURABILITY



TECHNOLOGY



QUALITY

MPW
Multi Ply Wood
WOOD 4 WORLD

 mpwbr.com

TECHNICAL SHEET

12mm plywood

MPW's 12mm plywood is a robust and versatile option, suitable for applications that require greater structural strength. With 9 layers, it is sanded and calibrated, ensuring a precise and high-quality structure, ideal for projects that require stability and durability.

Also available in a film faced version, 12mm plywood offers additional protection against moisture, impacts and wear, making it suitable for more challenging environments. Produced under strict quality standards, it ensures reliable and long-lasting performance, making it the perfect choice for those looking for a resistant, efficient and high-performance material, without compromising on quality.

Furthermore, WBP (Water Boiled Proof) gluing is an important differentiator, ensuring that the plywood is resistant to water and steam, allowing it to be used in environments with greater humidity without compromising its integrity. This choice is recommended for those seeking an efficient and economical solution without sacrificing quality.

Product Features		
Nominal Dimensions (mm)	Conforme demanda	
Nominal Thickness (mm)	12	
Number of Veneers	9	
Type of Resin Used	Phenolic Resin (WBP)*	
Finishes	Calibrated - C/C - C+/C - C+/C+ or Film Faced (Other finishes available upon request)	
Phenolic Film Weight	Starting from 110g/m²	
Composition	PINUS, EUCA, COMBI e TWIN	
Technical Product Characteristics		
Description	Value	Reference
Average Density (kg/m ³)	550 a 700	ABNT NBR 17002
Average Tensile Strength (kgf/cm ²)	15,60	BS EN 314 ABNT NBR 17002
Average Rupture (%)	43	BS EN 314 ABNT NBR 17002
Formaldehyde Emission (ppm)	<0,05	CARB Phase 2 and TSCA Title VI - US EPA Regulations
Glue Quality	Class 1, 2 e 3 WBP	NBR ISO 12466- 2:2012
Note: *Phenolic Resin (WBP) with low formaldehyde emission. ** Bonding strength Class 3 according to ABNT NBR ISO 12466.		



TECHNICAL SHEET

12mm plywood

12mm Plywood – Compositions

MPW's 12mm plywood is available in a variety of compositions, each designed to meet the different needs of your projects:

- **100% Pine:** Ideal for applications that require lightness without compromising strength. 12mm plywood with 100% Pine offers good structural stability, easy handling, and high durability.
- **100% Eucalyptus:** Recommended for more demanding conditions, 12mm plywood with 100% Eucalyptus offers superior resistance. Its dense structure guarantees excellent performance, extending its useful life.
- **Twin:** With a composition that combines a core of one wood with layers of another, 12mm Twin plywood provides a balance between internal resistance and external durability, being a versatile option for various applications.
- **Combi:** This composition combines different types of wood to optimize strength and performance. 12mm Combi plywood offers an adjustable solution, taking advantage of the best characteristics of the woods used to meet the specific demands of the project.

These compositions guarantee the reliability and high quality required for different types of projects and applications.

