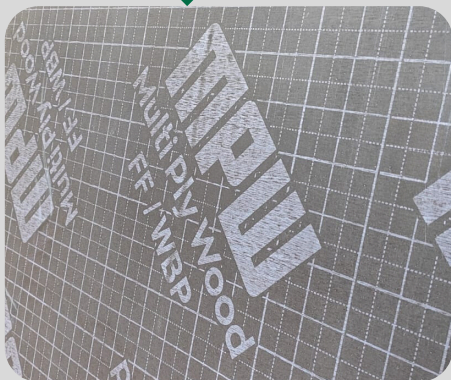
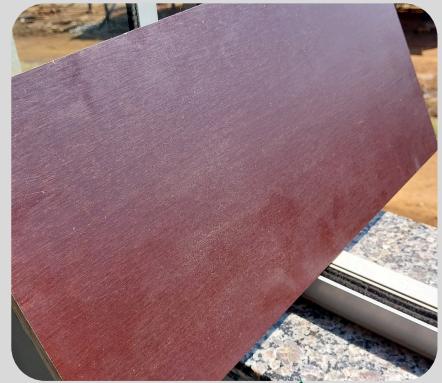


MPW

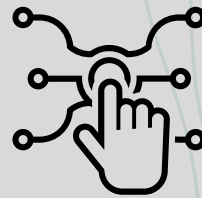
Multi Ply Wood

WOOD 4 WORLD

**15mm
Sanded,
Calibrated and
Film Faced
Plywood**



DURABILITY



TECHNOLOGY



QUALITY

MPW
Multi Ply Wood
WOOD 4 WORLD

 mpwbr.com

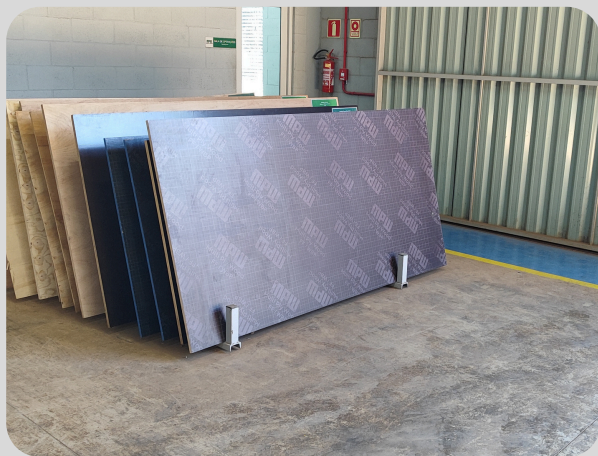
TECHNICAL SHEET

15mm plywood

MPW's 15mm plywood is a robust and versatile solution, ideal for projects that require high performance. Available in 9 or 11 ply options, this plywood offers superior resistance to stresses and deformations, ensuring stability and durability.

It can be found in film faced, white, calibrated or non-calibrated versions, adapting to the specific needs of your project. The plastic lamination on the surfaces provides additional protection against humidity, impacts and abrasions, extending the useful life of the material.

Furthermore, the WBP (Water Boiled Proof) bonding is a crucial differentiator, ensuring that the plywood resists water and steam, making it suitable for humid and outdoor environments without compromising its integrity. With all these features, MPW's 15mm plywood is a high-quality and reliable choice for demanding applications.



Product Features		
Nominal Dimensions (mm)	2440x1220 ou 2500x1250	
Nominal Thickness (mm)	15	
Number of Veneers	9 e 11	
Type of Resin Used	Phenolic Resin (WBP)*	
Finishes	Calibrated - C/C - C+/C - C+/C+ or Film Faced (Other finishes available upon request)	
Phenolic Film Weight	Starting from 110g/m ²	
Composition	PINUS, EUCA, COMBI e TWIN	
Technical Product Characteristics		
Description	Value	Reference
Average Density (kg/m ³)	550 a 700	ABNT NBR 17002
Average Tensile Strength (kgf/cm ²)	14,17	BS EN 314 ABNT NBR 17002
Average Rupture (%)	62	BS EN 314 ABNT NBR 17002
Formaldehyde Emission (ppm)	<0,05	CARB Phase 2 and TSCA Title VI - US EPA Regulations
Glue Quality	Class 1, 2 e 3 WBP	NBR ISO 12466- 2:2012
Note: *Phenolic Resin (WBP) with low formaldehyde emission. ** Bonding strength Class 3 according to ABNT NBR ISO 12466.		

TECHNICAL SHEET

15mm plywood

15mm Plywood – Compositions

MPW's 15mm plywood is available in a variety of compositions, each offering specific characteristics to meet the needs of your project:

- **100% Pine:** Ideal for applications that require lightness and strength. 15mm plywood with 100% Pine combines good structural performance with ease of handling, providing high stability and durability.
- **100% Eucalyptus:** Known for its superior strength and durability, 15mm plywood with 100% Eucalyptus is perfect for demanding conditions. The dense and robust structure of eucalyptus ensures excellent performance and a long service life.
- **Twin:** This composition combines a core of one wood with layers of another, resulting in a material that offers a balance between internal strength and external durability. 15mm Twin plywood is versatile and suitable for a variety of applications, with improved performance.
- **Combi:** 15mm Combi plywood combines different types of wood to optimize the performance and resistance of the material. This composition allows the characteristics of the plywood to be adjusted according to the needs of the project, taking advantage of the best properties of the woods used.

Each composition is designed to offer high quality and reliability, adapting to different requirements and applications.

