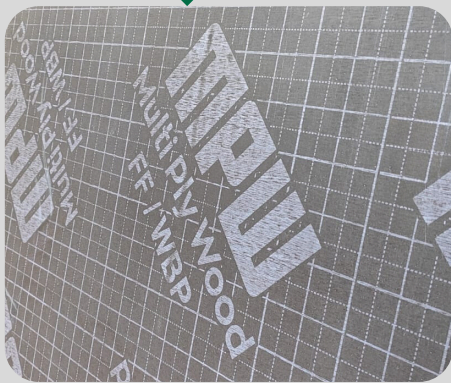
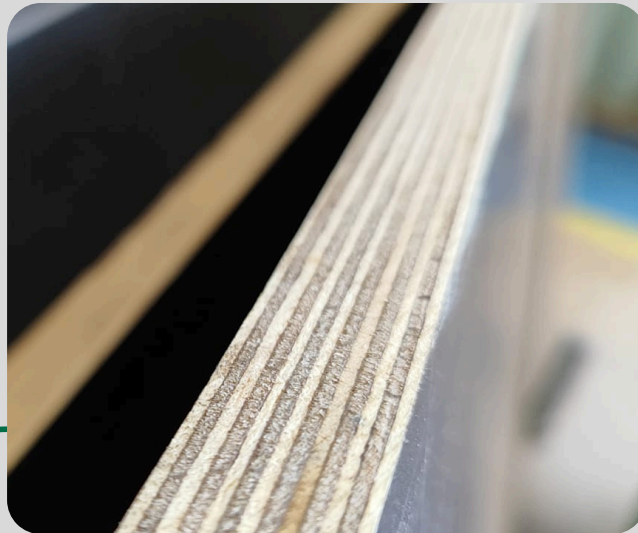
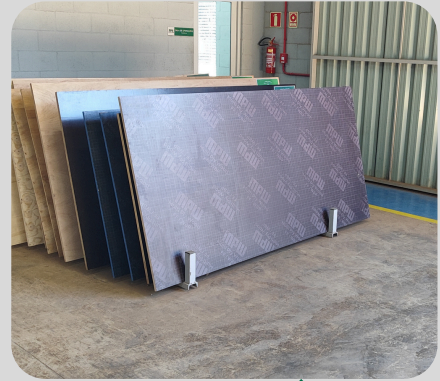


MPW

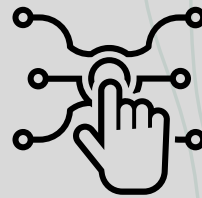
Multi Ply Wood

WOOD 4 WORLD

Plywood
18mm
13 ply
Film Faced
Calibrated



DURABILITY



TECHNOLOGY



QUALITY

MPW
Multi Ply Wood
WOOD 4 WORLD

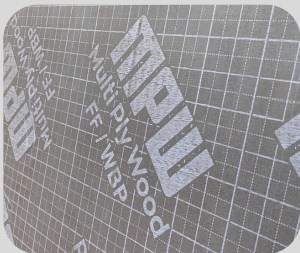
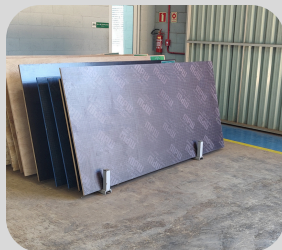
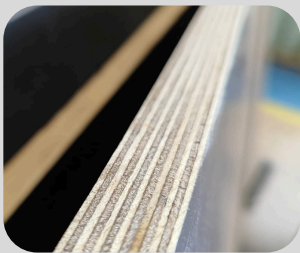
 mpwbr.com

TECHNICAL SPECIFICATIONS

18mm - 13 ply - Film Faced - Calibrated

High-quality plywood, 18mm thick with 13 plies, stands out for its exceptional strength and durability. The multi-layer construction provides superior resistance to stresses and deformations, making it ideal for high-performance applications. The plastic lamination (Film Faced) applied to the surfaces offers additional protection against moisture, impacts, and abrasions, significantly increasing the material's lifespan.

Additionally, the calibrated plywood ensures uniform thickness, essential for applications requiring millimeter precision. The WBP (Water Boiled Proof) bonding is another highlight, guaranteeing resistance to water and steam, allowing the plywood to be used in humid or exterior environments without compromising its integrity. These features make the 18mm, 13-ply, film-faced, calibrated plywood a premium choice for demanding and high-quality projects.



Product features - COMBI (Pinus/Euca)			
Nominal dimensions (mm)	As per demand		
Nominal Thickness (mm)	18		
Number of Layers	13		
Type of Resin	Phenolic Resin (WBP)*		
Minimum Film Weight (g/m ²)	From 110 to 240g/m ²		
Film Color	Black or Brown		
Technical characteristics of the product			
Description	Value	Reference	
Moisture Content	9,3%	ABNT NBR 17002	
Density (kg/m ³)	620 a 750		
Phenolic film anchorage	Adhesion according to	ABNT NBR 17001	
Chemical Resistance	Resistance according to		
Shear bond strength after 24 hour immersion in water	1,66	ABNT NBR 17002	
Shear bond strength in immersion with boiling water	1,34		
Description	Long.	Transverse	Reference
MOE - Modulus of Elasticity in Static Bending (MPa)	4989	5356	ABNT NBR 17002
MOR - Modulus of Rupture in Static Bending (MPa)	39,41	52,92	
Note: *Phenolic Resin (WBP) with low formaldehyde emission. ** Bond strength Class 3 according to ABNT NBR ISO 12466 standard.			

Essays and reports
conducted by:



TECHNICAL SPECIFICATIONS

18mm - 13 ply - Film Faced - Calibrated

Combi Composition: Eucalyptus and Pine

The combi composition, utilizing eucalyptus and pine, provides a perfect balance between strength and lightness. Eucalyptus, with its stronger fibers and dense structure, offers a solid structural base, enhancing the durability and load-bearing capacity of the plywood. Its mechanical strength makes the material more robust and reliable, ideal for internal layers that require greater rigidity.

On the other hand, pine is used to make the plywood structure lighter and to improve the bonding process. Its less dense fibers facilitate adhesion between layers, ensuring a more efficient and uniform bonding. Additionally, pine contributes to the overall lightness of the plywood, making it easier to handle and install without compromising its overall strength.

This combination of eucalyptus and pine results in plywood that offers the best of both materials: the strength and durability of eucalyptus, combined with the lightness and efficient bonding of pine, creating a balanced, resilient, and versatile final product for a wide range of applications.

