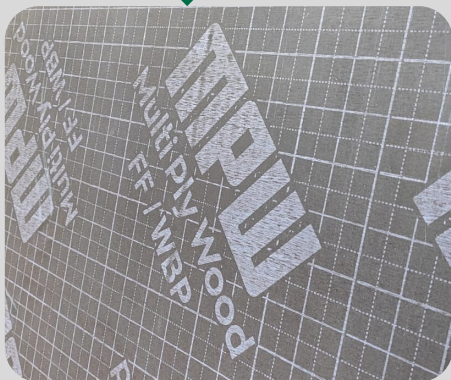
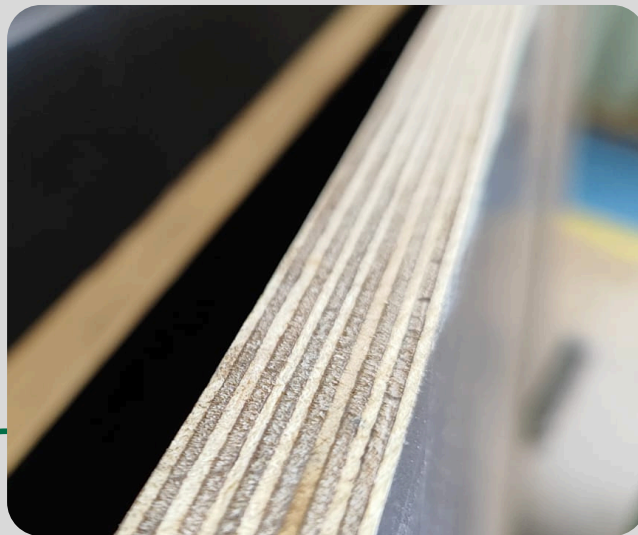
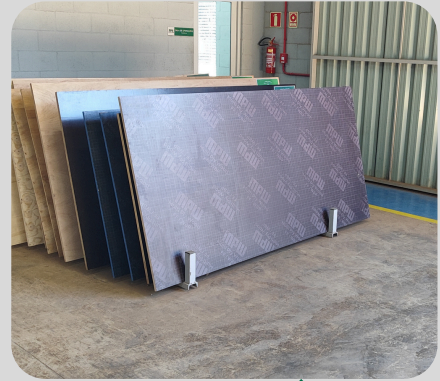


# MPW

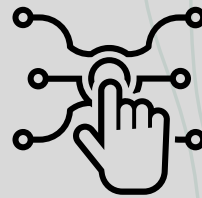
## Multi Ply Wood

WOOD 4 WORLD

**18mm  
Sanded,  
Calibrated and  
Film Faced  
Plywood**



DURABILITY



TECHNOLOGY



QUALITY

**MPW**  
Multi Ply Wood  
WOOD 4 WORLD

 [mpwbr.com](http://mpwbr.com)

# TECHNICAL SHEET

## 18mm plywood

MPW's 18mm plywood is a robust and reliable solution for projects that require maximum strength and durability. Sanded and calibrated, it offers a solid and uniform structure, ideal for applications that demand high stability and strength.

Also available in a film faced version, it provides extra protection against humidity and impacts, increasing its longevity in challenging environments. In addition, WBP (Water Boiled Proof) gluing is an important differentiator, ensuring that the plywood is resistant to water and steam, making it ideal for humid or outdoor environments without compromising its integrity.

This combination of characteristics makes 18mm plywood a versatile, high-quality choice for demanding projects.



Product Features		
Nominal Dimensions (mm)	2440x1220 ou 2500x1250	
Nominal Thickness (mm)	18	
Number of Veneers	9, 11 e 13	
Type of Resin Used	Phenolic Resin (WBP)*	
Finishes	Calibrated - C/C - C+/C - C+/C+ or Film Faced (Other finishes available upon request)	
Phenolic Film Weight	Starting from 110g/m <sup>2</sup>	
Composition	PINUS, EUCA, COMBI e TWIN	
Technical Product Characteristics		
Description	Value	Reference
Average Density (kg/m <sup>3</sup> )	550 a 700	ABNT NBR 17002
Average Tensile Strength (kgf/cm <sup>2</sup> )	14,09	BS EN 314 ABNT NBR 17002
Average Rupture (%)	67	BS EN 314 ABNT NBR 17002
Formaldehyde Emission (ppm)	<0,05	CARB Phase 2 and TSCA Title VI - US EPA Regulations
Glue Quality	Class 1, 2 e 3 WBP	NBR ISO 12466- 2:2012
<p><b>Note:</b> *Phenolic Resin (WBP) with low formaldehyde emission. ** Bonding strength Class 3 according to ABNT NBR ISO 12466.</p>		

# TECHNICAL SHEET

## 18mm plywood

### 18mm Plywood – Compositions

MPW's 18mm plywood is available in a variety of compositions, each with specific characteristics to meet the needs of your project:

- **100% Pine:** Ideal for applications that require lightness and strength. 18mm plywood with 100% Pine offers good structural performance, ease of handling, as well as high stability and durability.
- **100% Eucalyptus:** Known for its superior strength, 18mm plywood with 100% Eucalyptus is perfect for the most demanding conditions. Its dense structure ensures excellent performance and a long service life.
- **Twin:** This composition combines a core of one wood with layers of another, resulting in a material that balances internal strength and external durability. 18mm Twin plywood is versatile, being suitable for a variety of applications that require optimized performance.
- **Combi:** 18mm Combi plywood combines different types of wood to maximize the material's performance and resistance. This composition allows the characteristics to be adjusted according to the project's needs, taking advantage of the best properties of the woods used.

Each of these compositions is designed to offer high quality and reliability, adapting to different requirements and applications.

