

MPW

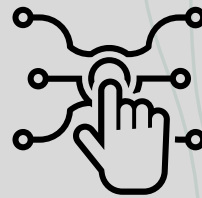
Multi Ply Wood

WOOD 4 WORLD

**21mm
Sanded,
Calibrated and
Film Faced
Plywood**



DURABILITY



TECHNOLOGY



QUALITY

MPW
Multi Ply Wood
WOOD 4 WORLD

 mpwbr.com

TECHNICAL SHEET

21mm plywood

MPW's 21mm plywood is a robust and highly resistant choice, ideal for applications that require maximum durability and stability. With a sanded and calibrated structure, it offers a solid and uniform base, perfect for projects that require high resistance to loads and impacts.

Also available in a film faced version, the 21mm plywood provides additional protection against moisture and abrasion, increasing its durability in adverse conditions. The WBP (Water Boiled Proof) bonding is another highlight, ensuring that the material is resistant to water and steam, making it suitable for humid and outdoor environments.

This combination of characteristics makes 21mm plywood a reliable and versatile solution for demanding, high-performance projects.



Product Features		
Nominal Dimensions (mm)	2440x1220 ou 2500x1250	
Nominal Thickness (mm)	21	
Number of Veneers	15	
Type of Resin Used	Phenolic Resin (WBP)*	
Finishes	Calibrated - C/C - C+/C - C+/C+ or Film Faced (Other finishes available upon request)	
Phenolic Film Weight	Starting from 110g/m ²	
Composition	PINUS, EUCA, COMBI e TWIN	
Technical Product Characteristics		
Description	Value	Reference
Average Density (kg/m ³)	550 a 700	ABNT NBR 17002
Average Tensile Strength (kgf/cm ²)	12,54	BS EN 314 ABNT NBR 17002
Average Rupture (%)	40	BS EN 314 ABNT NBR 17002
Formaldehyde Emission (ppm)	<0,05	CARB Phase 2 and TSCA Title VI - US EPA Regulations
Glue Quality	Class 1, 2 e 3 WBP	NBR ISO 12466- 2:2012
<p>Note: *Phenolic Resin (WBP) with low formaldehyde emission. ** Bonding strength Class 3 according to ABNT NBR ISO 12466.</p>		

TECHNICAL SHEET

21mm plywood

21mm Plywood - Compositions

MPW's 21mm plywood is available in a variety of compositions, each with specific characteristics to meet the needs of your project:

- **100% Pine:** Ideal for applications that require lightness and strength. 21mm plywood with 100% Pine offers good structural performance, ease of handling, as well as high stability and durability.
- **100% Eucalyptus:** Known for its superior strength, 21mm plywood with 100% Eucalyptus is perfect for the most demanding conditions. Its dense structure ensures excellent performance and a long service life.
- **Twin:** This composition combines a core of one wood with layers of another, resulting in a material that balances internal strength and external durability. 21mm Twin plywood is versatile, being suitable for a variety of applications that require optimized performance.
- **Combi:** 21mm Combi plywood combines different types of wood to maximize the material's performance and resistance. This composition allows the characteristics to be adjusted according to the project's needs, taking advantage of the best properties of the woods used.

Each of these compositions is designed to offer high quality and reliability, adapting to different requirements and applications.

