

MPW

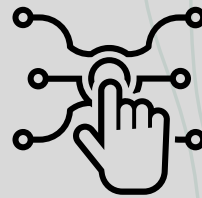
Multi Ply Wood

WOOD 4 WORLD

6mm Sanded and Calibrated Plywood



DURABILITY



TECHNOLOGY



QUALITY

MPW
Multi Ply Wood
WOOD 4 WORLD

 mpwbr.com

TECHNICAL SHEET

6mm plywood

MPW's 6mm plywood is a lightweight and precise option, ideal for packaging applications and other derivatives that require strength and stability in smaller thicknesses. With 5 layers, this plywood is sanded and calibrated, ensuring uniformity and high quality in its structure, making it perfect for cutting and assembly processes.

MPW uses rigorous production standards to offer a product that maintains its integrity even in environments that demand resistance to wear and tear. This choice is recommended for those seeking an efficient and economical solution without sacrificing quality.

Furthermore, WBP (Water Boiled Proof) gluing is an important differentiator, ensuring that the plywood is resistant to water and steam, allowing it to be used in environments with greater humidity without compromising its integrity. This choice is recommended for those seeking an efficient and economical solution without sacrificing quality.



Product Features		
Nominal Dimensions (mm)	Conforme demanda	
Nominal Thickness (mm)	6	
Number of Veneers	5	
Type of Resin Used	Phenolic Resin (WBP)*	
Finishes	Calibrated - C/C - C+/C - C+/C+ or Film Faced (Other finishes available upon request)	
Composition	PINUS, EUCA, COMBI e TWIN	
Technical Product Characteristics		
Description	Value	Reference
Average Density (kg/m ³)	550 a 700	ABNT NBR 17002
Average Tensile Strength (kgf/cm ²)	18,27	BS EN 314 ABNT NBR 17002
Average Rupture (%)	70	BS EN 314 ABNT NBR 17002
Formaldehyde Emission (ppm)	<0,05	CARB Phase 2 and TSCA Title VI - US EPA Regulations
Glue Quality	Class 1, 2 e 3 WBP	NBR ISO 12466- 2:2012
Note: *Phenolic Resin (WBP) with low formaldehyde emission. ** Bonding strength Class 3 according to ABNT NBR ISO 12466.		

TECHNICAL SHEET

6mm plywood

6mm Plywood – Compositions

MPW's 6mm plywood is available in a variety of compositions, each with specific characteristics to meet the needs of your project:

- **100% Pine:** Ideal for applications that require lightness and strength. 6mm plywood with 100% Pine offers good structural performance, ease of handling, as well as high stability and durability.
- **100% Eucalyptus:** Known for its superior strength, 6mm plywood with 100% Eucalyptus is perfect for the most demanding conditions. Its dense structure ensures excellent performance and a long service life.
- **Twin:** This composition combines a core of one wood with layers of another, resulting in a material that balances internal strength and external durability. 6mm Twin plywood is versatile, being suitable for various applications that require optimized performance.
- **Combi:** 6mm Combi plywood combines different types of wood to maximize the material's performance and resistance. This composition allows the characteristics to be adjusted according to the project's needs, taking advantage of the best properties of the woods used.

Each of these compositions is designed to offer high quality and reliability, adapting to different requirements and applications.

