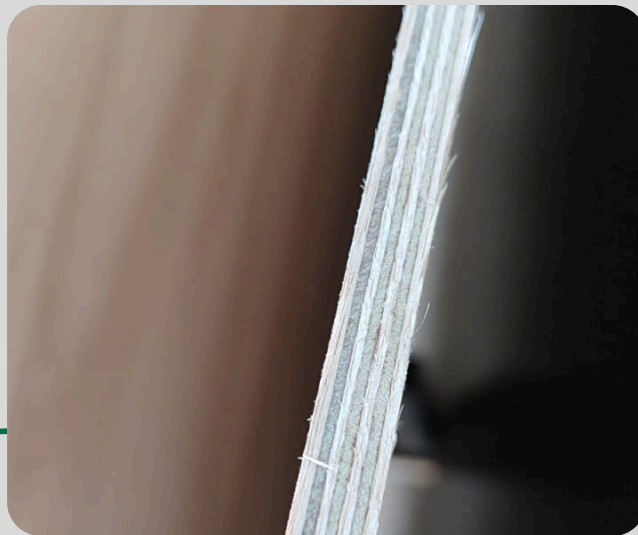


# MPW

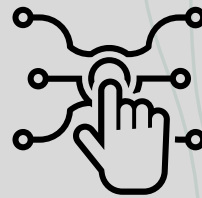
## Multi Ply Wood

WOOD 4 WORLD

8mm  
Sanded and  
Calibrated  
Plywood



DURABILITY



TECHNOLOGY



QUALITY

MPW  
Multi Ply Wood  
WOOD 4 WORLD

 [mpwbr.com](http://mpwbr.com)

# TECHNICAL SHEET

## Compensated 8mm

MPW's 8mm plywood is a versatile solution, suitable for applications that require greater strength and stability, without compromising lightness. With 7 layers, it is sanded and calibrated, ensuring a uniform and high-quality structure, which facilitates cutting and assembly in various processes.

Produced under strict control standards, MPW's 8mm plywood offers reliable durability and performance, even in environments that require wear resistance. It is an efficient and economical choice, ideal for those seeking quality without sacrificing cost-effectiveness.

Furthermore, WBP (Water Boiled Proof) gluing is an important differentiator, ensuring that the plywood is resistant to water and steam, allowing it to be used in environments with greater humidity without compromising its integrity. This choice is recommended for those seeking an efficient and economical solution without sacrificing quality.



Product Features		
Nominal Dimensions (mm)	Conforme demanda	
Nominal Thickness (mm)	8	
Number of Veneers	7	
Type of Resin Used	Phenolic Resin (WBP)*	
Finishes	Calibrated - C/C - C+/C - C+/C+ or Film Faced (Other finishes available upon request)	
Composition	PINUS, EUCA, COMBI e TWIN	
Technical Product Characteristics		
Description	Value	Reference
Average Density (kg/m <sup>3</sup> )	550 a 700	ABNT NBR 17002
Average Tensile Strength (kgf/cm <sup>2</sup> )	19,52	BS EN 314 ABNT NBR 17002
Average Rupture (%)	93	BS EN 314 ABNT NBR 17002
Formaldehyde Emission (ppm)	<0,05	CARB Phase 2 and TSCA Title VI - US EPA Regulations
Glue Quality	Class 1, 2 e 3 WBP	NBR ISO 12466- 2:2012
<p><b>Note:</b> *Phenolic Resin (WBP) with low formaldehyde emission. ** Bonding strength Class 3 according to ABNT NBR ISO 12466.</p>		

# TECHNICAL SHEET

## Compensated 8mm

### 8mm Plywood – Compositions

MPW's 8mm plywood is available in a variety of compositions, each designed to meet the different needs of your projects:

- **100% Pine:** Ideal for applications that require lightness without compromising strength. 8mm plywood with 100% Pine offers good structural stability, easy handling, and high durability.
- **100% Eucalyptus:** Recommended for more demanding conditions, 8mm plywood with 100% Eucalyptus offers superior resistance. Its dense structure guarantees excellent performance, extending its useful life.
- **Twin:** With a composition that combines a core of one wood with layers of another, 8mm Twin plywood provides a balance between internal resistance and external durability, being a versatile option for various applications.
- **Combi:** This composition combines different types of wood to optimize strength and performance. 8mm Combi plywood offers an adjustable solution, taking advantage of the best characteristics of the woods used to meet the specific demands of the project.

These compositions guarantee the reliability and high quality required for different types of projects and applications.

